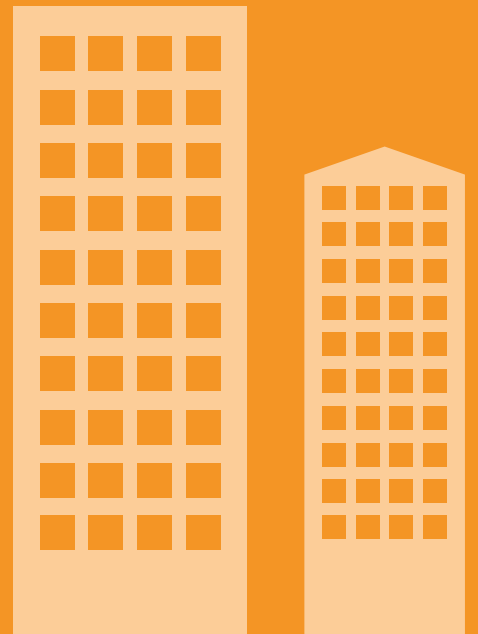


The text 'A1' in a bold, red, sans-serif font. The letter 'A' is stylized with a flame-like shape at its top.



# Wetherby A1 Systems

A1 non-combustible EWI Systems





# Wetherby A1 Systems

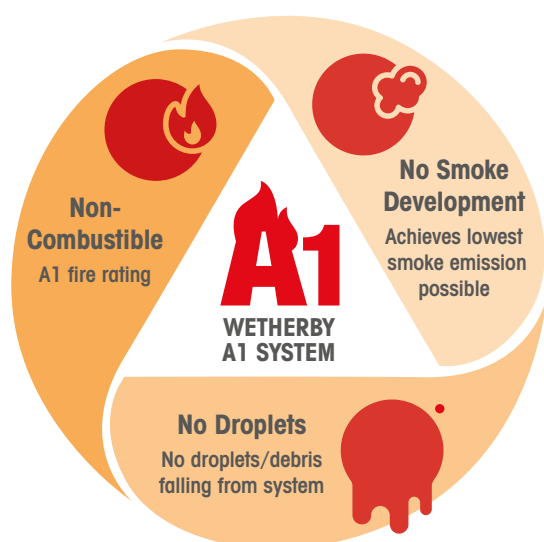
Wetherby are pleased to announce breakthrough EWI systems achieving A1 non-combustible fire ratings.

The Wetherby A1 systems are some of the first A1 rated fireproof insulation solutions to be launched in the UK for building facades.

The A1 Systems set new standards in external wall insulation fire performance.

The vast majority of Mineral Wool EWI systems in the UK achieve an A2 limited-combustible fire rating. This new innovative set of A1 systems comprises of non-combustible components to achieve the highest possible European fire classification to the BS EN 13501-1 standard.

European Classification to BS EN 13501-1	National Classification (England, Wales and NI)	Building Regulations Risk Classification Scotland
<b>A1</b>	<b>Non-Combustible</b>	<b>Non-Combustible</b>
A2	Limited Combustibility	N/A
B -s3, d2 or Better	Class 0	Low
C -s3, d2 or Better	Class 1	Medium
D -s3, d2 or Better	Class 2 & 3	High
E -s3, d2 or Better	Class 4	Very High



To achieve an A1 rating, the system must be classified to BS EN 13501-1 using the following fire tests.

- BS EN 13823:2010+A1:2014 - Reaction to fire tests for building products. SBI (Single Burning Item) test used to determine the reaction to fire by exposing the full system to a flame.
- BS EN ISO 1716:2010 - Reaction to fire tests for products. Determines the gross heat of combustion (Calorific Value) for each individual component of the system.
- BS EN 1182:2010 - Reaction to fire tests for products - Non-combustibility Test. A more in depth version of the BS EN 1716:2010 test, testing larger amounts of each material to ensure products containing some organic content still meet the A1 standard.

For A1 building materials only, neither smoke development nor dripping behaviour is classified. A1 therefore means NO smoke and NO burning droplets or waste!

**Call 01942 717100 for more information.**

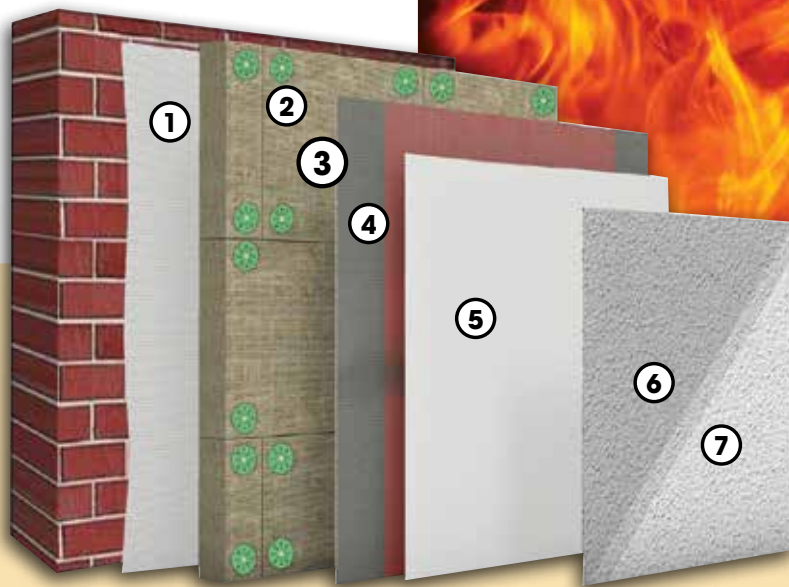


# Wetherby A1 Render Systems

The thermal benefit of the system is provided by ROCKWOOL's A1 Stone Wool Insulation which is coated in Wetherby's K+A A1 Scrim Adhesive.

This is based predominantly on mineral and non-combustible raw material such as quartz, limestone, cement and lime, which ensures perfect adhesion between substrates and insulation board.

The system is finished with Wetherby's Heck ED Mineral Render and Heck Silicone Paint, which is ideal for use with stone wool insulation, providing great breathability.



1. Wetherby K+A **A1** Scrim Adhesive (used as bedding adhesive)
2. ROCKWOOL Stone Wool Insulation
3. Wetherby K+A **A1** Scrim Adhesive
4. Wetherby AGG **A1** Reinforcement Mesh
5. Wetherby Primer
6. Wetherby Heck ED Mineral Render
7. Wetherby Heck Silicone Paint



# Wetherby A1 Brick Slip Systems

Wetherby are constantly developing new innovative external wall systems that perform well with fire so it made sense to add Wetherby's A1 Brick Slip System to the portfolio.

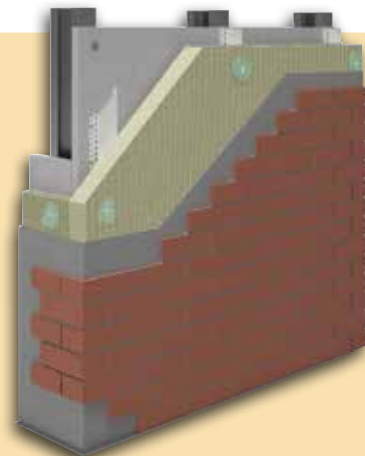
Wetherby's A1 Brick Slip system is available in various options that include ROCKWOOL's A1 Stone Wool insulation and real clay Brick Slips.

Unlike some alternative brick slip systems, our brick slip products are 'real' clay, manufactured and fired in just the same way as traditional brick but as a slip. Also available in preformed corners (pistols) to ensure you can achieve a genuine brick appearance to your facade.

ROCKWOOL Stone Wool insulation is incorporated to help enhance the fire performance. Stone Wool insulation is a semi-rigid insulation board that is A1 non-combustible, and will not develop any significant toxic smoke or promote flame spread, even when directly exposed to fire.

## Brick Slip System

- Euroclass A1 reaction to fire classification in accordance with BS EN13501-1:2018.
- Incorporates ROCKWOOL A1 Stone Wool insulation, 80mm-250mm thicknesses.
- Category 1 hard body impact, achieving the highest standard in impact resistance.
- Unique Metal Rag Rail, allowing all fixings into steel stud, to provide the best adherence and structural performance.

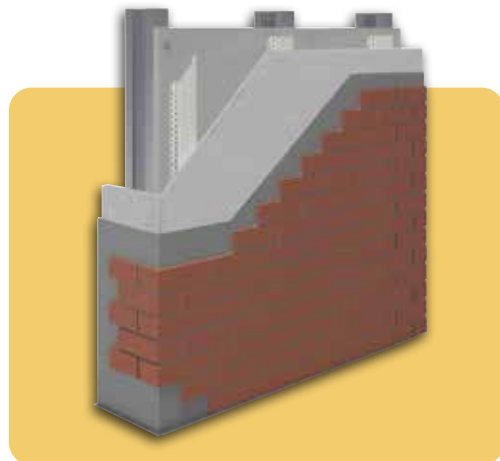
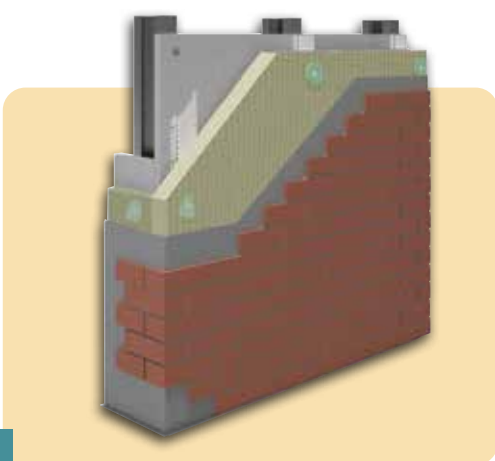
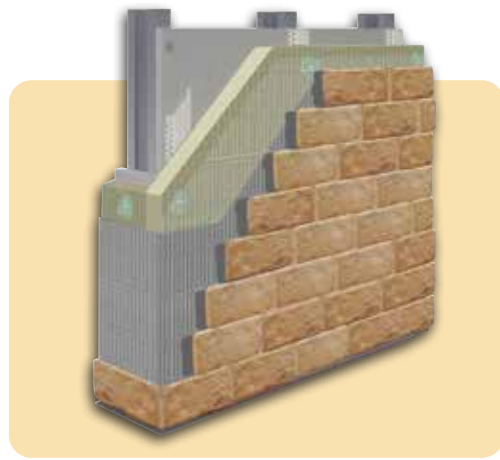
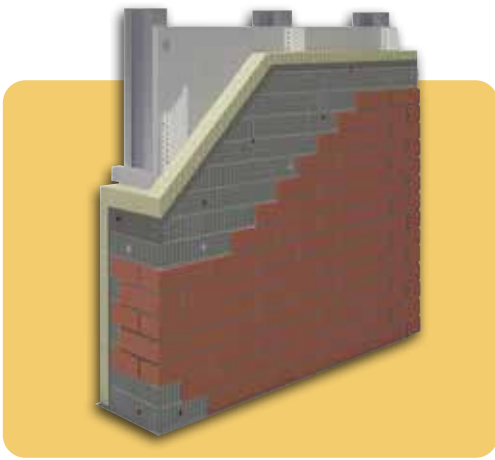
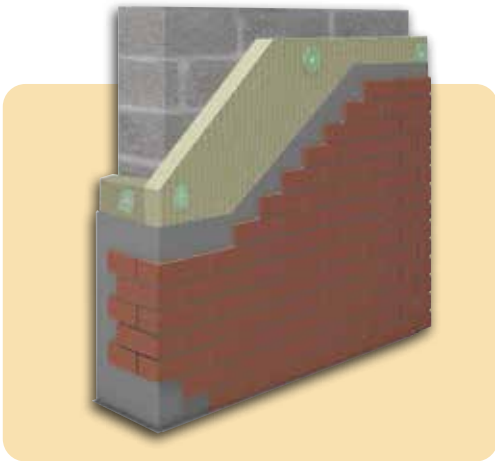


## Stainless Steel Brick Mesh System

- Euroclass A1 reaction to fire classification in accordance with BS EN13501-1:2018.
- Incorporating a stainless-steel mesh, fixed back to the metal rails, providing enhanced strength and stability.
- Improved wind load performance.
- Improved system strength/ impact performance.
- Stainless steel mesh, provides coursing for the brick slips, speeding up system installation.



# Systems



# Approvals & Certifications

---



BBA Accredited System

---



KIWA BDA Accredited System

---



European Organisation  
for Technical Approvals

---





### Head Office

Wetherby Building Systems Limited  
1 Kid Glove Road  
Golborne Enterprise Park  
Golborne  
Greater Manchester  
WA3 3GS

Technical Support: 0800 107 32 99  
Samples: 0800 107 32 88  
[wbs-ltd.co.uk](http://wbs-ltd.co.uk)



### Glasgow

62 Hydepark Street  
Glasgow  
Lanarkshire  
G3 8BW  
Tel: 0141 221 8115

### Bridgend

Unit 17A  
Brynmenyn Industrial Estate  
Millers Avenue  
Bridgend  
CF32 9TD  
Tel: 01656 720 422